

Capacitive Discharge Ignition System for Racing

Features

- Complete capacitive discharge ignition system for 4-6-8 cylinder race engines
- 135 mJ spark energy output.
- Digitally set launch, burnout, and maximum RPM limits with 100 RPM steps from 3,000 to 9,900 RPM (10,900 RPM for maximum RPM limit).
- PC programmable advance features ranging from a simple RPM based advance curve to a 3D timing map with boost proportional retard.
- Built-in data logging capability with 16 Mbit DataFLASH memory.
- Dedicated input terminals for launch RPM and manifold pressure.
- One general purpose input and two general purpose input/output terminals. Inputs can be programmed for high gear retard, burnout RPM limit, vehicle speed sensor, and throttle position sensor. Outputs can be programmed for RPM window switch, nitrous system activation, and multi-gear shift light functions.
- Fully encapsulated construction. 12 pin Deutsch connector used for signal connections.
- Compact size. Module is 7.0"L x 5.25"W x 1.9"H. Coil is 4.4"L x 3.2"W x 3.0"H.



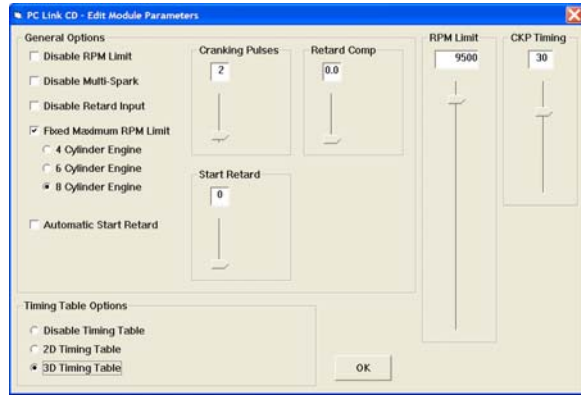
- Highly efficient switching power supply based on US Patents 6518733 and 6636021. Less than 5 amp current draw at 8,000 RPM.

Part Number	Description	Price
102003	CD-1 Capacitive Discharge Ignition System Includes P/N 102001 CD-1 ignition module, P/N 102002 CD-1 ignition coil, and wire harness. Not legal for use or sale on pollution controlled vehicles.	\$595.00
102004	USB Interface (required for custom programming and data logging capability). Not legal for use or sale on pollution controlled vehicles.	\$99.95

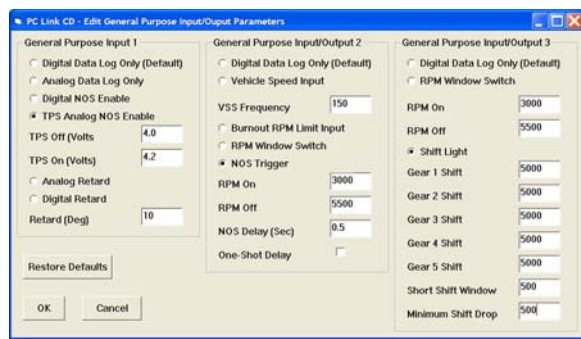
Software for CD-1 Capacitive Discharge Ignition System

PC Link CD Software

- Use of the PC Link CD software and GPIO terminals is optional and not required for basic applications of the CD-1 system. Please visit our website for complete details including software downloads.
- You can establish setup parameters including function of the general purpose input/output (GPIO) terminals and program advance curves.
- You can download and upload to the module, open and save files to disk, and print setup values including graphs for advance curves. Includes comprehensive on-line help system.
- Requires laptop PC with minimum 300 MHz Pentium processor and super VGA display (SVGA with 1024 x 768 pixel resolution) running Windows ME/XP/Vista. The PC must have a CDROM drive for program loading and a free USB port. Not legal for use or sale on pollution controlled vehicles.



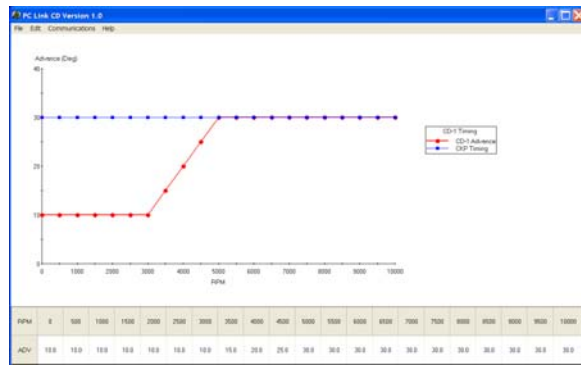
PC Link CD - Module Parameters



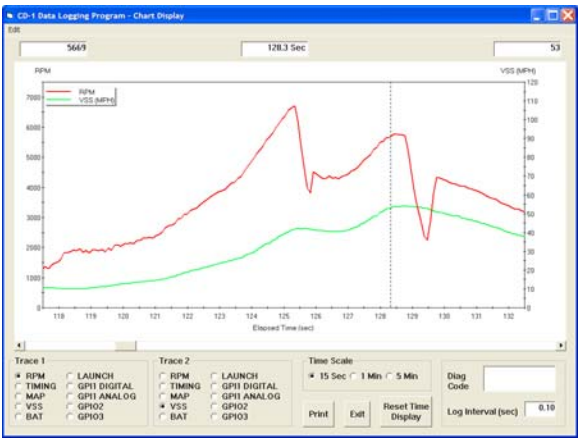
PC Link CD - GPIO Parameters

CD Log Software

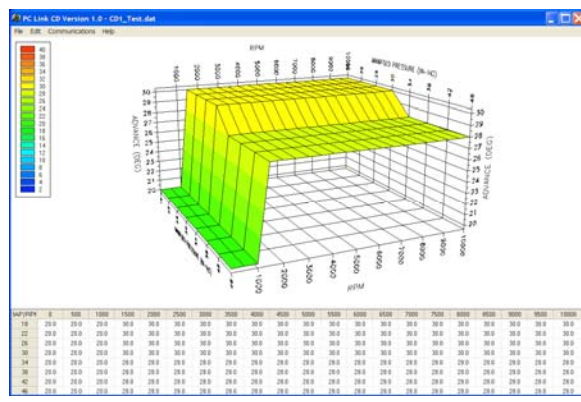
- Chart display for downloaded data allows you to monitor vehicle operation on the track. You have a range of capabilities for analyzing the displayed data. This feature is especially useful for checking the operation of accessories, such as a nitrous system activated by the CD-1 unit.
- You can download data from the module, open and save files to disk, and print chart graphics. Includes comprehensive on-line help system.
- Same PC requirements as listed above for PC Link CD software. Not legal for use or sale on pollution controlled vehicles.



PC Link CD - RPM Advance Curve



CD Log - Chart Display



PC Link CD - 3D Boost Timing Map